

T(N) · TK(N) Turbine pump (multi stage centrifugal pump) 4 pole

Compact multi-stage

Compact self priming

Multi-stage

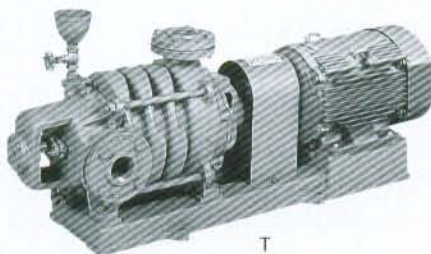
High pressure

Self priming

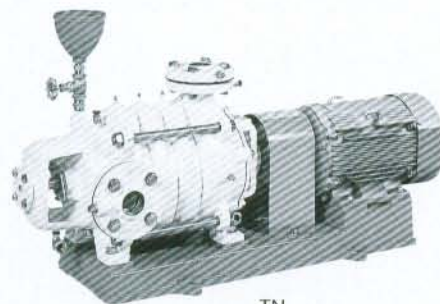
Submersible fresh water

Deep well submersible

Control panel



T
(Companion flanges are optional accessories)



TN
(Companion flanges are optional accessories)

Applications

- Water supply to buildings (TN · TKN)
- Cooling water
- Waterworks (TN · TKN)
- General industry
- Other general water supply

Features

- Less installation space according to simple and compact pump construction with light weight.
- Nylon coating type (TN · TKN) is also available.
- Evaluated item of [horizontal centrifugal pump] by (C) Public Buildings Association., Ltd.

Maximum back pressure

0.2Mpa {2kgf/cm²} (except some models)

Maximum suction head

Pump bore	Suction head (20°C)
40-100mm	- 6m
125 · 150mm	- 5.5m
200mm	- 4m (in case with 250mm foot valve)

Standard specifications

- Liquid Clean water 0 ~ 40°C
- Materials Impeller CAC406 (BC6)
Shaft SUS403 (T · TK)
SUS304 (TN · TKN)
Casing FC (T · TK)
FC + nylon coating (TN · TKN)
- Shaft sealing Gland packing
- Flange Suction side : JIS 10K thin type
Discharge side : JIS 10K thick type
(Bore40 · 50mm JIS10K thin type)

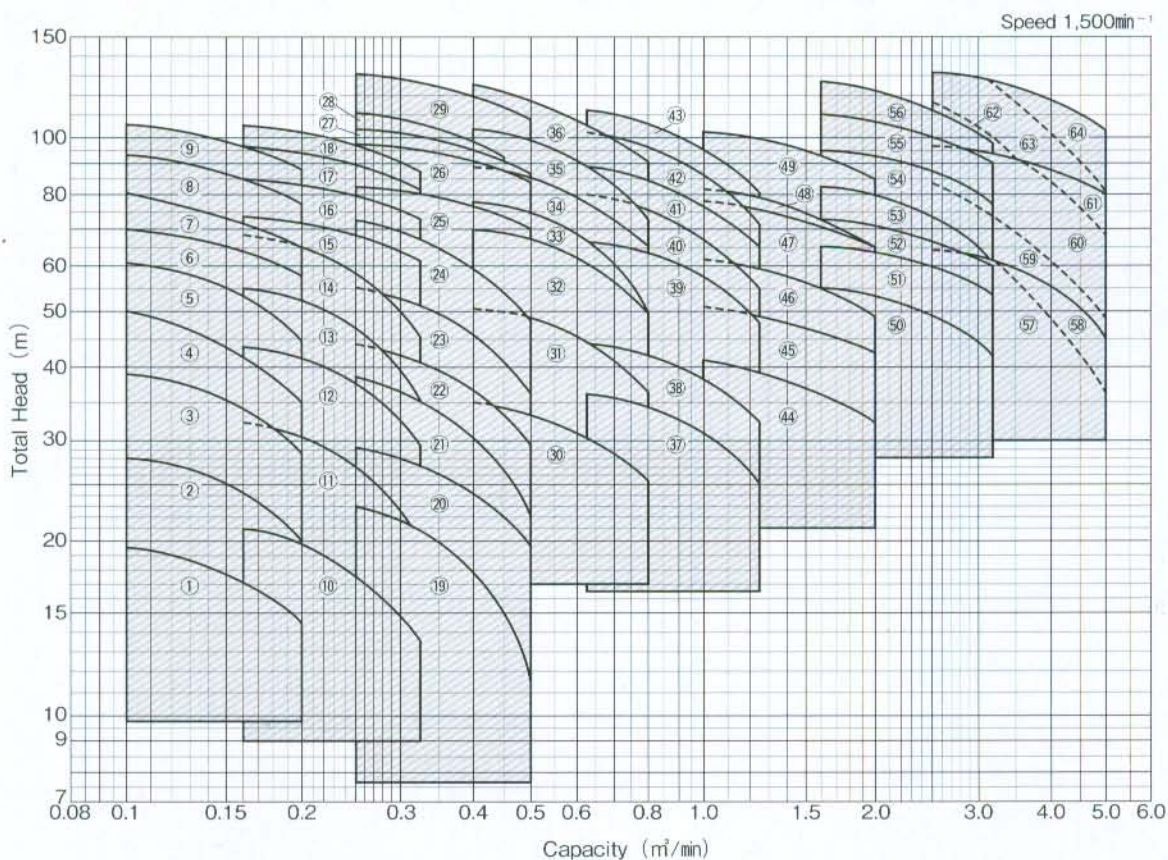
Standard accessories

Motor, Base, coupling, exhaust valve, coupling cover
Priming funnel, priming valve

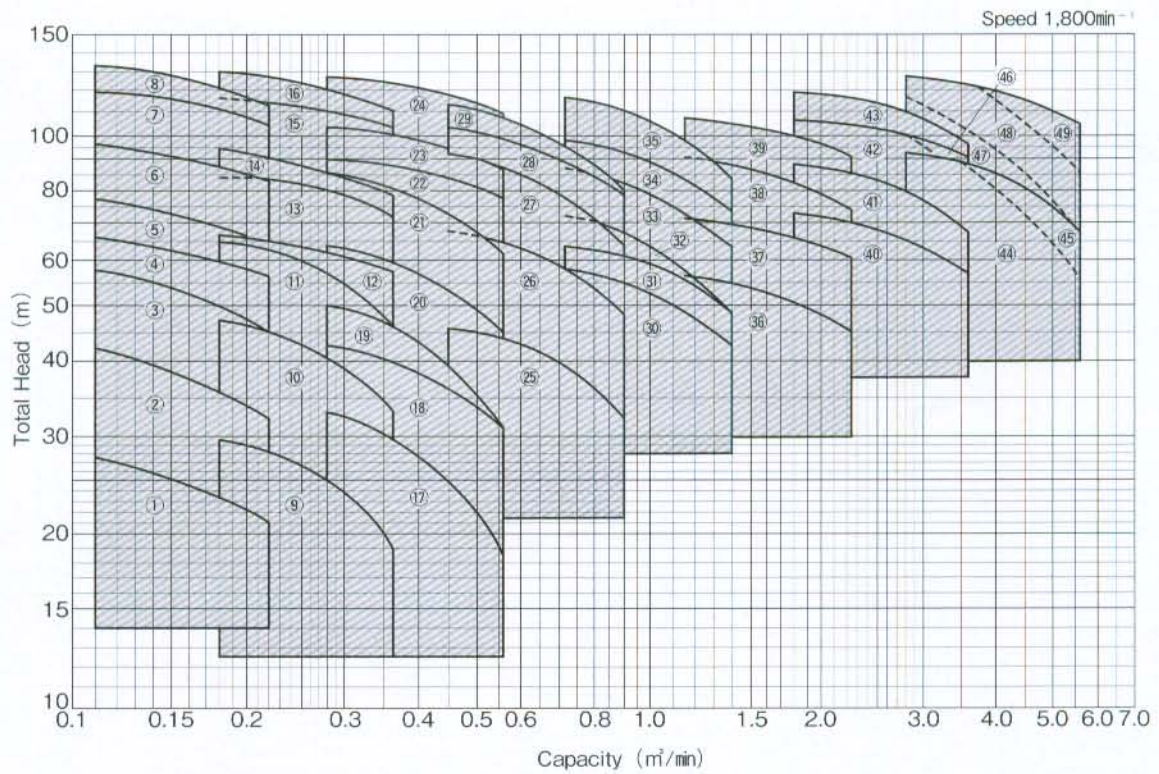
Kind

- T(N) · TK(N): Left side suction (viewed from motor)
- T(N)-R · TK(N)-R: Right side suction

Selection chart 50Hz



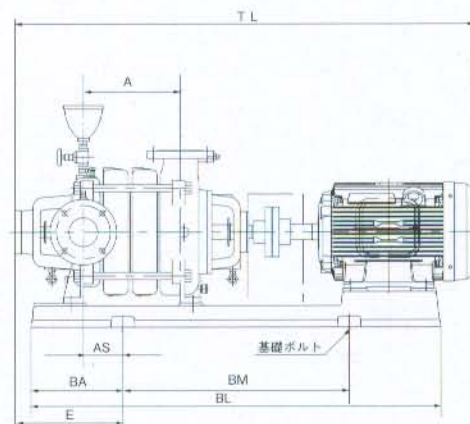
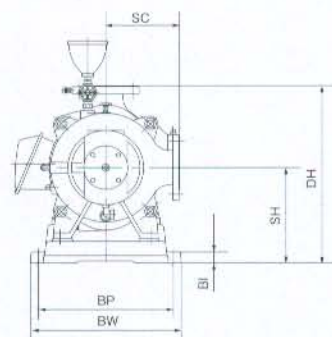
■ Selection chart 60Hz



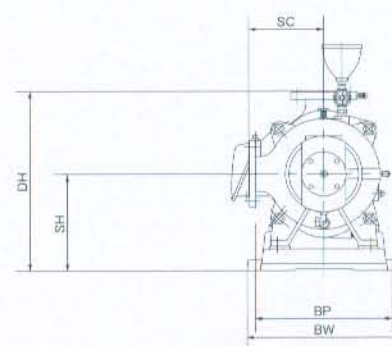
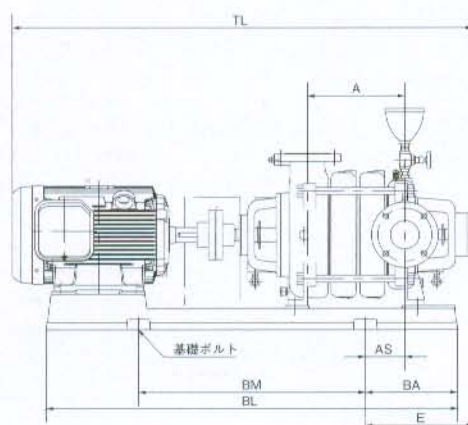
■ Specification & outline dimension table Inquire specification sheets and drawings in case of actual work planning

Flange Suction side: JIS 10K thin type
 Discharge side: JIS 10K thick type
 The drawing shows example complete with TEFC motor

T · TK



T · TK-R



T(N)·TK(N)

50Hz

Bore mm	Ref	Model	Motor kW	No. of stage S	Performance						Max. Back pressure MPa (kgf/cm ²)	Dimensions (mm)											Weight kg		
					Capacity m ³ /min	Head m	Capacity m ³ /min	Head m	Capacity m ³ /min	Head m		SC	A	BL	BA	BM	BP	BW	DH	SH	TL	E		AS	
40	1	T-405 × 2-MN1.5	1.5	2	0.1	19.5	0.14	18	0.2	14.5	0.20	2.0	160	142	646	121	400	253	293	375	200	778	222	72	84
	2	T-405 × 3-MN1.5	1.5	3	0.1	28	0.14	26	0.2	20	0.20	2.0	160	194	646	121	400	253	293	375	200	840	257	107	98
	3	T-405 × 4-MN2.2	2.2	4	0.1	39	0.14	36	0.2	28.5	0.20	2.0	160	246	736	161	400	255	295	375	200	933	297	147	113
	4	T-405 × 5-MN3.7	3.7	5	0.1	50	0.14	45	0.2	35	0.20	2.0	160	298	855	173	500	280	316	388	213	1001	252	102	140
	5	T-405 × 6-MN3.7	3.7	6	0.1	60	0.14	56	0.2	44.5	0.20	2.0	160	350	855	173	500	280	316	388	213	1053	304	154	149
	6	TK-405 × 6-MN3.7	3.7	6	0.1	70	0.14	66	0.2	58	0.20	2.0	165	375	1007	184	630	280	326	398	218	1048	197	58	152
	7	TK-405 × 7-MN3.7	3.7	7	0.1	80	0.14	74	0.2	64	0.20	2.0	165	435	1007	184	630	280	326	398	218	1108	257	118	162
	8	TK-405 × 8-MN5.5	5.5	8	0.1	93	0.14	88	0.2	77	0.20	2.0	165	495	1114	241	630	280	328	418	238	1232	314	175	197
	9	TK-405 × 9-MN5.5	5.5	9	0.1	105	0.14	100	0.2	88.5	0.049	0.5	165	555	1214	291	630	280	328	418	238	1292	359	220	207
50	10	T-505 × 2-MN1.5	1.5	2	0.16	21	0.22	19	0.32	13.5	0.20	2.0	170	162	648	121	400	251	291	405	215	848	274	112	96
	11	T-505 × 3-MN2.2	2.2	3	0.16	32	0.22	29	0.32	20	0.20	2.0	170	219	728	161	400	259	299	405	215	946	314	152	115
	12	T-505 × 4-MN3.7	3.7	4	0.16	43	0.22	40	0.32	29	0.20	2.0	170	276	818	157	500	280	320	415	225	1019	304	142	144
	13	T-505 × 5-MN3.7	3.7	5	0.16	55	0.22	50	0.32	35	0.20	2.0	170	333	861	178	500	280	316	418	228	1076	327	165	155
	14	T-505 × 6-MN5.5	5.5	6	0.16	68	0.22	62	0.32	45	0.20	2.0	170	390	964	223	500	280	316	418	228	1194	371	209	179
	15	TK-505 × 6S-M5.5	5.5	6	0.16	73	0.22	70	0.32	61	0.20	2.0	175	405	1034	266	500	280	328	448	248	1177	364	200	193
	16	TK-505 × 7S-M7.5	7.5	7	0.16	85	0.22	81	0.32	72	0.20	2.0	175	470	1204	281	630	280	328	448	248	1280	312	148	224
	17	TK-505 × 8S-M7.5	7.5	8	0.16	97	0.22	92	0.32	81	0.098	1.0	175	535	1204	281	630	280	328	448	248	1345	377	213	240
	18	TK-505 × 9S-M7.5	7.5	9	0.16	104	0.22	100	0.32	88.5	0.049	0.5	175	600	1269	346	630	280	328	448	248	1410	442	278	256
65	19	T-655 × 2-MN2.2	2.2	2	0.25	23	0.36	19.2	0.5	11.5	0.20	2.0	190	155	732	167	400	310	344	445	235	888	267	108	124
	20	T-655 × 2-MN3.7	3.7	2	0.25	29	0.36	25.5	0.5	19.5	0.20	2.0	190	155	751	174	400	310	348	445	235	904	261	102	134
	21	T-655 × 3-MN3.7	3.7	3	0.25	38.5	0.36	33	0.5	22	0.20	2.0	190	220	821	161	500	310	348	458	248	969	243	84	156
	22	T-655 × 3-MN5.5	5.5	3	0.25	44	0.36	38.5	0.5	29	0.20	2.0	190	220	846	173	500	340	388	458	248	1025	272	113	160
	23	T-655 × 4-MN5.5	5.5	4	0.25	55	0.36	48.5	0.5	35.5	0.20	2.0	190	285	921	211	500	340	388	458	248	1090	300	141	176
	24	T-655 × 5-MN7.5	7.5	5	0.25	72	0.36	63	0.5	47.5	0.20	2.0	190	350	1011	188	630	340	388	458	248	1193	290	131	194
	25	TK-655 × 5S-M11	11	5	0.25	82	0.36	78	0.5	70	0.20	2.0	190	385	1222	270	630	310	358	488	268	1327	317	129	273
	26	TK-655 × 6S-M11	11	6	0.25	98	0.36	94	0.5	84	0.20	2.0	190	460	1222	270	630	310	358	488	268	1402	392	204	290
	27	TK-655 × 7S-M11	11	7	0.25	103	0.36	98	0.5	86	0.20	2.0	190	535	1372	420	630	310	358	488	268	1477	467	279	310
	28	TK-655 × 8S-M11	11	8	0.25	110	0.36	102	0.45	95	0.098	1.0	190	610	1372	420	630	310	358	488	268	1552	542	354	326
	29	TK-655 × 9S-M15	15	9	0.25	130	0.36	123	0.5	108	0.049	0.5	190	685	1492	325	800	310	358	488	268	1671	448	260	362
80	30	T-805 × 2-MN5.5	5.5	2	0.4	35	0.56	31.5	0.8	25.5	0.20	2.0	205	190	895	198	500	340	384	498	268	1065	324	134	176
	31	T-805 × 3-MN7.5	7.5	3	0.4	51	0.56	46	0.8	36	0.20	2.0	205	270	1080	225	630	340	384	498	268	1183	246	56	204
	32	T-805 × 4-MN11	11	4	0.4	70	0.56	64	0.8	50	0.20	2.0	205	350	1142	256	630	375	419	498	268	1360	380	190	238
	33	T-805 × 5-MN11	11	5	0.4	77.5	0.56	70	0.8	50	0.20	2.0	205	430	1354	275	800	380	428	518	288	1440	314	124	276
	34	T-805 × 5-MN15	15	5	0.4	89	0.56	81	0.8	65	0.20	2.0	205	430	1354	275	800	380	428	518	288	1472	314	124	294
	35	T-805 × 6-MN15	15	6	0.4	103	0.56	93	0.8	72	0.20	2.0	205	510	1354	275	800	380	428	518	288	1552	394	204	313
	36	T-805 × 7S-M18.5	18.5	7	0.4	124	0.56	112	0.8	90.5	0.049	0.5	205	590	1476	316	800	340	388	518	288	1611	396	206	382
	37	T-1005 × 2-MN7.5	7.5	2	0.63	36	0.9	32.5	1.25	24.5	0.20	2.0	250	225	970	170	630	380	424	583	313	1183	300	83	252
100	38	T-1005 × 2-MN11	11	2	0.63	44.5	0.9	40	1.25	32	0.20	2.0	250	225	1170	185	800	380	424	583	313	1280	245	28	271
	39	T-1005 × 3-MN15	15	3	0.63	67	0.9	60	1.25	47.5	0.20	2.0	250	315	1170	185	800	380	424	583	313	1402	335	118	315
	40	T-1005 × 4S-M18.5	18.5	4	0.63	80	0.9	71	1.25	55	0.20	2.0	250	405	1346	268	800	380	424	583	313	1474	333	116	394
	41	T-1005 × 4S-M22	22	4	0.63	89	0.9	80	1.25	64	0.20	2.0	250	405	1390	293	800	420	464	583	313	1506	357	140	433
	42	T-1005 × 5S-M22	22	5	0.63	101.5	0.9	91	1.25	71	0.20	2.0	250	495	1390	293	800	420	464	583	313	1596	447	230	463
	43	T-1005 × 5S-M30	30	5	0.63	111	0.9	100	1.25	80	0.20	2.0	250	495	1390	293	800	420	464	583	313	1596	447	230	478
	44	T-1255 × 2S-M15	15	2	1.0	41	1.4	38	2.0	32	0.20	2.0	290	255	1174	185	800	435	503	688	368	1386	366	81	420
125	45	T-1255 × 2S-M18.5	18.5	2	1.0	50.5	1.4	48	2.0	42.5	0.20	2.0	290	255	1174	185	800	435	503	688	368	1386	366	81	439
	46	T-1255 × 3S-M22	22	3	1.0	61	1.4	57	2.0	49	0.20	2.0	290	370	1437	314	800	435	503	708	388	1533	362	107	542
	47	T-1255 × 3S-M30	30	3	1.0	77	1.4	73.5	2.0	65	0.20	2.0	290	370	1437	314	800	435	503	708	388	1533	362	107	565
	48	T-1255 × 4S-M30	30	4	1.0	81	1.4	76	2.0	64.5	0.20	2.0	290	485	1437	314	800	435	503	708	388	1648	477	222	617
	49	T-1255 × 4S-M37	37	4	1.0	102	1.4	97	2.0	85	0.20	2.0	290	485	1479	264	1000	475	543	708	388	1817	415	160	673
150	50	T-1505 × 2S-M30	30	2	1.6	55	2.24	51	3.15	42</															

60Hz

Bore mm	Ref	Model	Motor kW	No. of stage S	Performance						Max. Back pressure MPa (kgf/cm ²)	Dimensions (mm)												Weight kg
					Capacity m ³ /min	Head m	Capacity m ³ /min	Head m	Capacity m ³ /min	Head m		SC	A	BL	BA	BM	BP	BW	DH	SH	TL	E	AS	
40	1	T-406 × 2-MN1.5	1.5	2	0.11	27.5	0.16	25	0.22	21	0.20 (2.0)	160	142	646	121	400	253	293	375	200	778	222	72	84
	2	T-406 × 3-MN2.2	2.2	3	0.11	42	0.16	38.5	0.22	32	0.20 (2.0)	160	194	726	161	400	255	295	375	200	881	270	120	104
	3	T-406 × 4-MN3.7	3.7	4	0.11	58	0.16	54	0.22	45	0.20 (2.0)	160	246	750	173	400	280	316	388	213	933	305	155	131
	4	TK-406 × 4S-M3.7	3.7	4	0.11	66	0.16	62	0.22	56	0.20 (2.0)	165	255	887	194	500	280	326	398	218	933	207	68	130
	5	TK-406 × 5S-M3.7	3.7	5	0.11	77	0.16	72	0.19	68	0.20 (2.0)	165	315	887	194	500	280	326	398	218	993	267	128	140
	6	TK-406 × 6S-M5.5	5.5	6	0.11	96	0.16	91	0.22	81	0.098 (1.0)	165	375	1114	241	630	280	328	418	238	1159	194	55	178
	7	TK-406 × 7S-M7.5	7.5	7	0.11	119	0.16	114	0.22	104	0.049 (0.5)	165	435	1214	291	630	280	328	418	238	1210	239	100	198
	8	TK-406 × 8S-M7.5	7.5	8	0.11	132	0.16	125	0.22	113	0.049 (0.5)	165	495	1214	291	630	280	328	418	238	1270	299	160	208
50	9	T-506 × 2-MN2.2	2.2	2	0.18	29.5	0.25	27	0.36	19	0.20 (2.0)	170	162	728	161	400	259	299	405	215	889	284	122	103
	10	T-506 × 3-MN3.7	3.7	3	0.18	47	0.25	43	0.36	33	0.20 (2.0)	170	219	818	157	500	280	320	415	225	962	274	112	132
	11	T-506 × 4-MN5.5	5.5	4	0.18	65	0.25	60	0.36	46	0.20 (2.0)	170	276	849	208	400	280	316	418	228	1080	357	195	155
	12	TK-506 × 4S-M5.5	5.5	4	0.18	67	0.25	64	0.36	57	0.20 (2.0)	175	275	1034	266	500	280	328	448	248	1079	234	70	168
	13	TK-506 × 5S-M7.5	7.5	5	0.18	84	0.25	81	0.36	72	0.20 (2.0)	175	340	1074	281	500	280	328	448	248	1150	312	148	193
	14	TK-506 × 6S-M7.5	7.5	6	0.18	94	0.25	88	0.36	78	0.098 (1.0)	175	405	1074	281	500	280	328	448	248	1215	377	213	208
	15	TK-506 × 7S-M11	11	7	0.18	116	0.25	112	0.36	103	0.049 (0.5)	175	470	1297	331	630	280	347	448	248	1383	359	195	260
	16	TK-506 × 8S-M11	11	8	0.18	130	0.25	124	0.36	110	0.049 (0.5)	175	535	1297	331	630	280	347	448	248	1448	424	260	275
65	17	T-656 × 2-MN3.7	3.7	2	0.28	33	0.4	28	0.56	18.5	0.20 (2.0)	190	155	751	174	400	310	348	445	235	904	261	102	134
	18	T-656 × 2-MN5.5	5.5	2	0.28	42.5	0.4	38.5	0.56	31	0.20 (2.0)	190	155	796	148	500	340	388	458	248	960	232	73	146
	19	T-656 × 3-MN5.5	5.5	3	0.28	50	0.4	43.5	0.56	29	0.20 (2.0)	190	220	846	173	500	340	388	458	248	1025	272	113	160
	20	T-656 × 3-MN7.5	7.5	3	0.28	64	0.4	57	0.56	45	0.20 (2.0)	190	220	896	198	500	340	388	458	248	1063	285	126	168
	21	T-656 × 4-MN11	11	4	0.28	86	0.4	77	0.56	61	0.20 (2.0)	190	285	1033	223	500	340	388	458	248	1231	324	165	201
	22	TK-656 × 4S-M11	11	4	0.28	90	0.4	86	0.56	77	0.20 (2.0)	190	310	1072	250	500	310	358	488	268	1261	372	184	251
	23	TK-656 × 5S-M11	11	5	0.28	102	0.4	97	0.45	95	0.20 (2.0)	190	385	1222	270	630	310	358	488	268	1333	317	129	273
	24	TK-656 × 6S-M15	15	6	0.28	126	0.4	120	0.56	108	0.049 (0.5)	190	460	1272	275	630	310	358	488	268	1451	391	203	308
80	25	T-806 × 2-MN7.5	7.5	2	0.45	45.5	0.63	41.5	0.9	32	0.20 (2.0)	205	190	895	198	500	340	384	498	268	1103	324	134	182
	26	T-806 × 3-MN11	11	3	0.45	68.5	0.63	62	0.9	48	0.20 (2.0)	205	270	1142	256	630	375	419	498	268	1280	300	110	219
	27	T-806 × 4-MN15	15	4	0.45	92	0.63	83	0.9	64	0.20 (2.0)	205	350	1354	275	800	380	428	518	288	1392	234	44	275
	28	T-806 × 4S-M18.5	18.5	4	0.45	102	0.63	95	0.9	79	0.20 (2.0)	205	350	1354	275	800	380	428	518	288	1351	234	44	322
	29	T-806 × 5S-M18.5	18.5	5	0.45	114	0.63	103	0.9	80	0.098 (1.0)	205	430	1354	275	800	380	428	518	288	1454	314	124	341
100	30	T-1006 × 2-MN15	15	2	0.71	58	1.0	52.5	1.4	42	0.20 (2.0)	250	225	1170	185	800	380	424	583	313	1312	245	28	285
	31	T-1006 × 2S-M18.5	18.5	2	0.71	64.5	1.0	59	1.4	48	0.20 (2.0)	250	225	1170	185	800	380	424	583	313	1289	245	28	332
	32	T-1006 × 3S-M18.5	18.5	3	0.71	73.5	1.0	64.5	1.4	47	0.20 (2.0)	250	315	1170	185	800	380	424	583	313	1379	335	118	362
	33	T-1006 × 3S-M22	22	3	0.71	86	1.0	78.5	1.4	63	0.20 (2.0)	250	315	1170	185	800	420	464	583	313	1483	338	128	385
	34	T-1006 × 3S-M30	30	3	0.71	97	1.0	89	1.4	72.5	0.20 (2.0)	250	315	1390	293	800	420	464	583	313	1483	267	50	408
	35	T-1006 × 4S-M30	30	4	0.71	116	1.0	105	1.4	83	0.20 (2.0)	250	405	1390	293	800	420	464	583	313	1573	357	140	438
125	36	T-1256 × 2S-M22	22	2	1.12	56	1.6	52	2.24	45	0.20 (2.0)	290	255	1437	314	800	435	503	708	388	1418	247	-8	497
	37	T-1256 × 2S-M30	30	2	1.12	71	1.6	68	2.24	60	0.20 (2.0)	290	255	1437	314	800	435	503	708	388	1418	247	-8	520
	38	T-1256 × 3S-M37	37	3	1.12	90	1.6	85	2.24	74	0.20 (2.0)	290	370	1479	264	1000	475	543	708	388	1702	300	45	613
	39	T-1256 × 3S-M45	45	3	1.12	107	1.6	102	2.24	90	0.20 (2.0)	290	370	1479	264	1000	475	543	708	388	1702	300	45	635
150	40	T-1506 × 2S-M45	45	2	1.8	73	2.5	68	3.55	57	0.20 (2.0)	320	300	1455	264	1000	475	543	803	443	1699	330	47	700
	41	T-1506 × 2S-M55	55	2	1.8	88	2.5	82	3.55	67.5	0.20 (2.0)	320	300	1502	252	1000	535	603	803	443	1740	329	46	784
	42	T-1506 × 2S-M75	75	2	1.8	106	2.5	101	3.55	91	0.20 (2.0)	320	300	1674	430	1000	595	663	803	443	1797	366	83	868
	43	T-1506 × 3S-M75	75	3	1.8	118	2.5	112	3.55	96	0.20 (2.0)	320	435	1674	430	1000	595	663	803	443	1932	501	218	923
200	44	T-2006A × 2S-M75	75	2	Impeller diameter varies according to duty point, please inquire with pump specification (capacity x total head)						0.20 (2.0)	370	360	1703	345	1000	540	600	898	488	1950	405	75	990
	45	T-2006A × 2S-M90	90	2							0.20 (2.0)	370	360	1703	345	1000	540	600	898	488	1990	405	75	1020
	46	T-2006B × 2S-M75	75	2							0.20 (2.0)	370	360	1703	345	1000	540	600	898	488	1950	405	75	990
	47	T-2006B × 2S-M90	90	2							0.20 (2.0)	370	360	1703	345	1000	540	600	898	488	1990	405	75	1020
	48	T-2006B × 2S-M110	110	2							0.20 (2.0)	370	360	1791	390	1000	600	660	898	488	2068	450	120	1165
	49	T-2006B × 2S-M132	132	2							0.20 (2.0)	370	360	1791	390	1000	600	660	898	488	2068	450	120	1205

This above models notation are in case of T · TK

multi-stage

priming

multi-stage

high pressure

can priming

fresh water

submersible

control panel